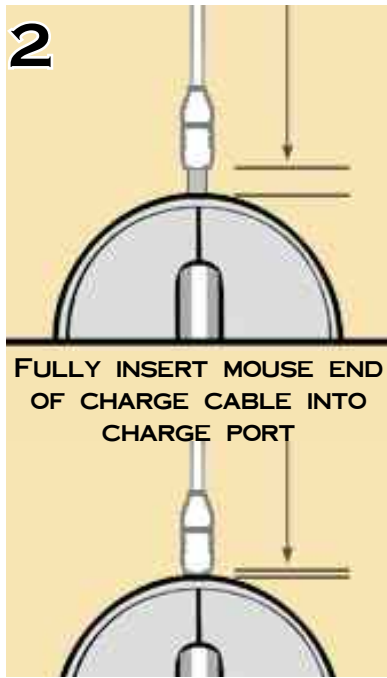
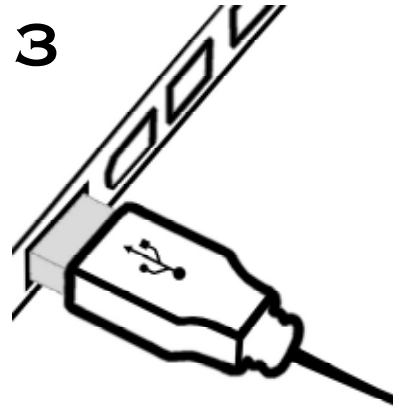


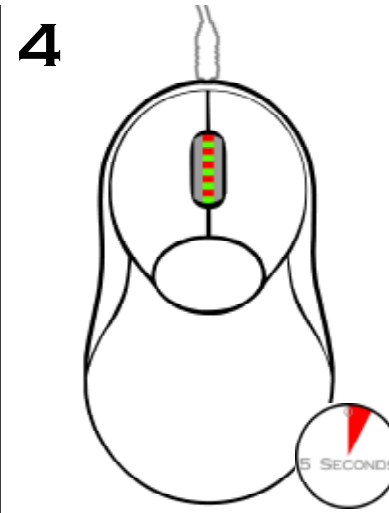
1 SWITCH MOUSE OFF  
INSTALL BATTERIES



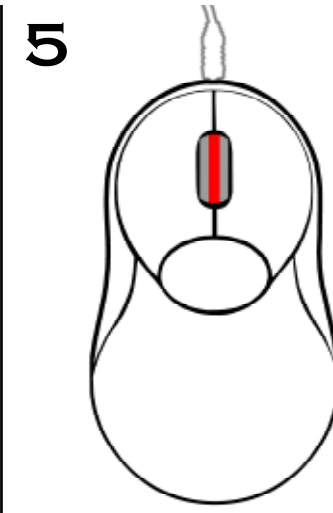
2 FULLY INSERT MOUSE END  
OF CHARGE CABLE INTO  
CHARGE PORT



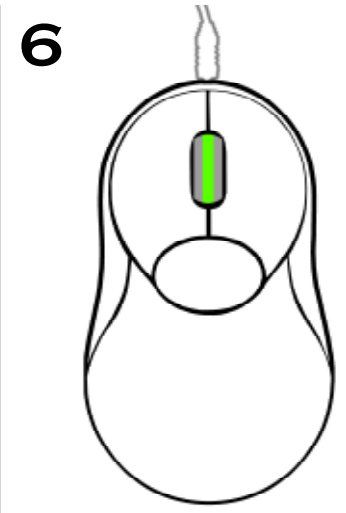
3 CONNECT USB END  
OF CHARGE CABLE TO  
COMPUTER



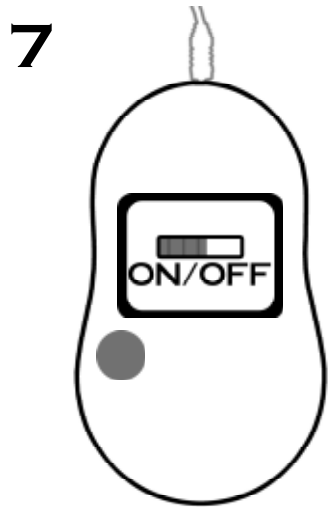
4 SCROLL WHEEL FLASHES  
RED & GREEN FOR 5  
SECONDS WHILE PREPARING  
TO CHARGE



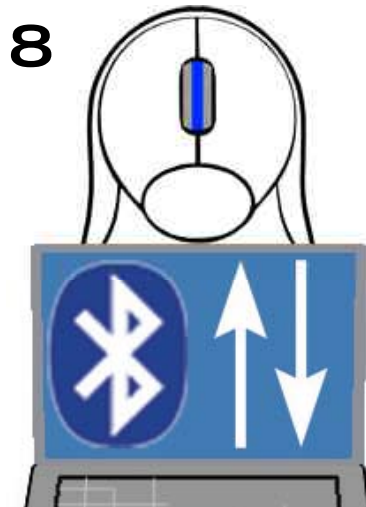
5 SCROLL WHEEL  
ILLUMINATES RED WHILE  
BATTERIES ARE CHARGING



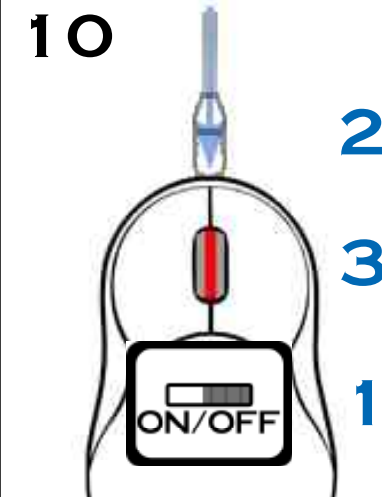
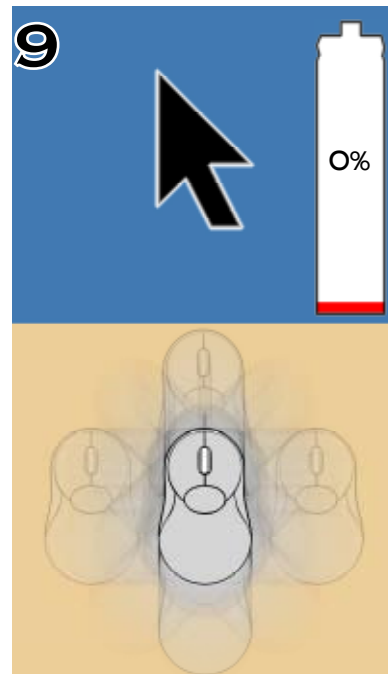
6 SCROLL WHEEL  
ILLUMINATES GREEN WHEN  
FULLY CHARGED  
CHARGE TIME = 2 HOURS



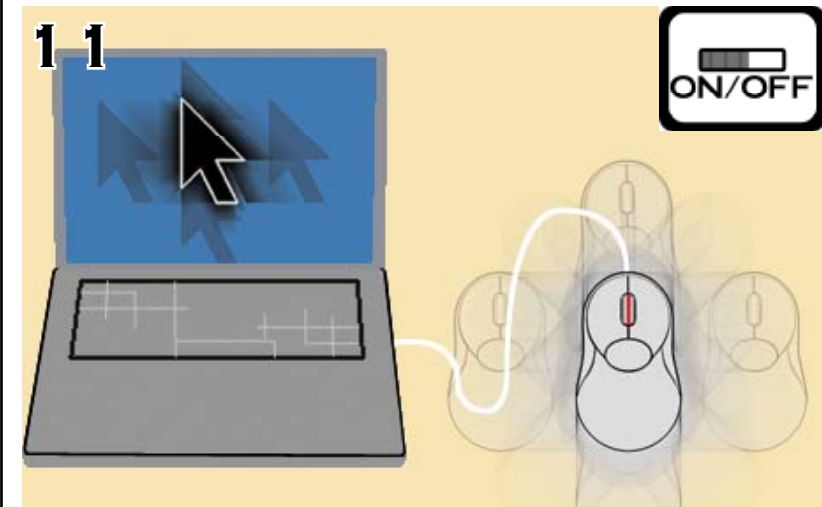
7 SWITCH MOUSE ON  
PRESS PAIRING BUTTON



8 WHILE SCROLL WHEEL  
GLOWS BLUE  
PAIR TO COMPUTER



10 WHEN BATTERIES FAIL  
SWITCH OFF  
CONNECT CHARGE CABLE  
SCROLL WHEEL GLOWS RED



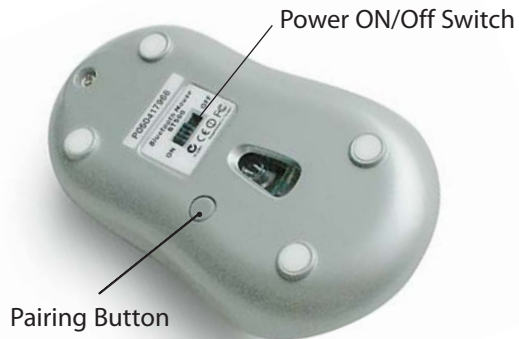
11 TO USE WHILE CHARGING  
SWITCH MOUSE ON ONCE SCROLL WHEEL IS SOLID RED  
DISCONNECT CABLE ONCE CHARGE IS COMPLETE (GREEN)

# PC Quick Setup Guide

## Mouse Top



## Mouse Bottom



Use power On/Off switch to conserve energy when not in use,



**NOTE:** A USB-BT adapter is required if your machine is not configured with built-in Bluetooth. Bluetake BT009X or BT009M Bluetooth USB Adapter recommended.

Available from: [www.radtech.us](http://www.radtech.us)

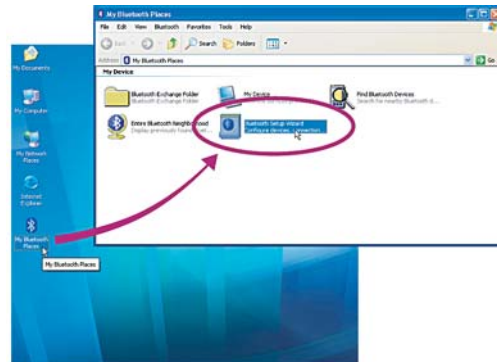
## Before Using

1. Install two AAA batteries into the battery slots of your BT500 Mouse. Alkaline or NiMH rechargeable recommended.
2. Slide the power switch to the on position and press the pairing button on the underside of the mouse until the scroll wheel glows blue to indicate mouse is discoverable.
3. Pair your BT 500 Bluetooth Mouse with your computer.

## Pairing Process PC

**NOTE:** Instructions for the pairing process are based on the WIDCOMM Bluetooth software 1.4.2 Build 10. Please follow the instructions that come with your Bluetooth software if you don't use WIDCOMM software.

1. Double-click on **"My Bluetooth Places"** icon from Windows desktop.
2. Double-click on **"Bluetooth Setup Wizard"** icon from *My Bluetooth Places* window.



## How to Install Batteries



1. Press and push raised area to open battery cover.



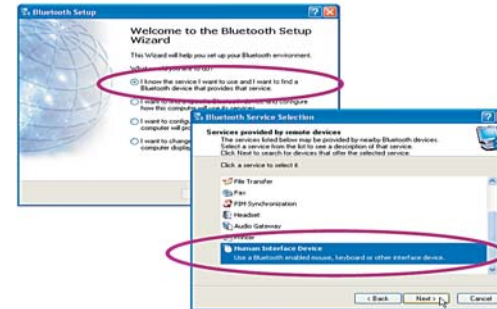
2. Insert AAA batteries into slots.



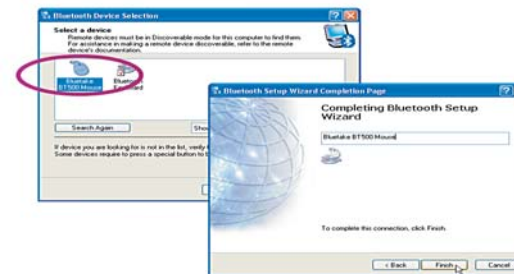
3. Slide battery cover back into position and snap into place.

Power-saving sleep mode extends battery life – when the mouse is moved after being in sleep mode, the connection is restored in seconds. Battery life averages 4-7 days when powered on 24/7, and up to several weeks when used 4-6 hours per day – switched off when not in use. Alkaline or NiMH rechargeable recommended.

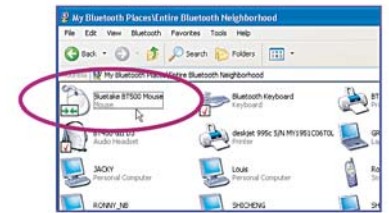
3. Select **"I know the service I want to use and..."** and click **"Next"** button to continue.
4. Select **"Human Interface Device"** and then Click **"Next"** button to continue.



5. The *Bluetooth Setup Wizard* starts to search for Bluetooth HID devices in the vicinity. Select the **"BT500 Bluetooth Mouse icon"** which will be displayed in the window when it is found. Click **"Next"** button to continue.
6. The *Bluetooth Setup Wizard* takes several seconds to configure related files to your system. Press **"Finish"** button to complete the pairing process after configuration.



Once the connection between your BT500 Mouse and computer is established, the connection will keep permanently and will re-establish automatically when Windows runs.



**NOTE:** Use care NOT to press pairing button once BT500 has been paired. If pressed, connection will be lost and pairing process will need to be repeated.

Please follow regional rules for Bluetooth use.

© 2004 RadTech, LLC. RadTech and the RadTech logo are trademarks of RadTech, LLC. Bluetake, the Bluetake logo and BT500 are trademarks of Bluetake Technology Co., Ltd. The Bluetooth word mark and logos are owned by Bluetooth SIG, Inc. and any use of such marks by Bluetake Technology Co., Ltd. is under license. WIDCOMM, BTW software are registered trademarks of WIDCOMM, Inc. All other trademarks belong to their respective owners.